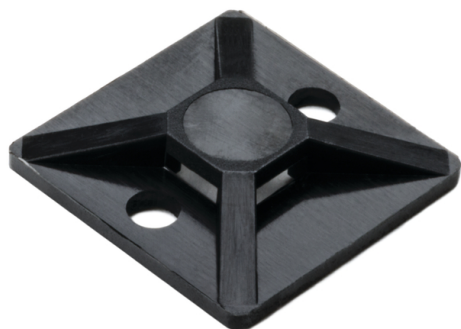


Specification Sheet

Part Number: MB30M4



Compact size fits most mounting applications.

Simple to install with a screw or rivet.

Single hole attachment with two-way entry for cable tie.

Screw Mount Cable Tie Base, 0.75" x .75", 0.14" Max Tie Width, 0.12" Hole Dia, PA66, Black, 1000/pkg

Article Number 151-28301

Type MB3

Color Black (BK)

Quantity Per bag

Product Description These cable tie mounts are compact in size. They are designed for simple yet robust installation. They pair with a cable tie for mounting applications including telecom equipment, switchgear and control cabinets.

Short Description Screw Mount Cable Tie Base, 0.75" x .75", 0.14" Max Tie Width, 0.12" Hole Dia, PA66, Black, 1000/pkg

Global Part Name MB3-PA66-BK

Length L (Imperial)	0.75
Length L (Metric)	19.0
Fixation Method	Screw Mounting and Rivet
Width W (Imperial)	0.75
Width W (Metric)	19.0
Cable Ties	T18 - T30
Height H (Imperial)	.15
Height H (Metric)	3.80
Cable Tie Width Max (Imperial)	0.14
Cable Tie Width Max (Metric)	3.6
Mounting Hole Diameter D (Imperial)	0.12
Mounting Hole Diameter D (Metric)	3.0 mm
Mounting Hole Diameter D Max (Metric)	3.0
Mounting Hole Centers (Imperial)	0.52

Material	Polyamide 6.6 (PA66)
Material Shortcut	PA66
Flammability	UL 94 V-2
Operating Temperature	-40°F to +185°F (-40°C to +85°C)
ROHS Compliant	Yes
Certification/Specification	UL
UL Recognized (US)	Yes
UL Recognized (US and Canada)	Yes
Package Quantity (Imperial)	1000
Package Quantity (Metric)	1000
Customs Number	3926909988